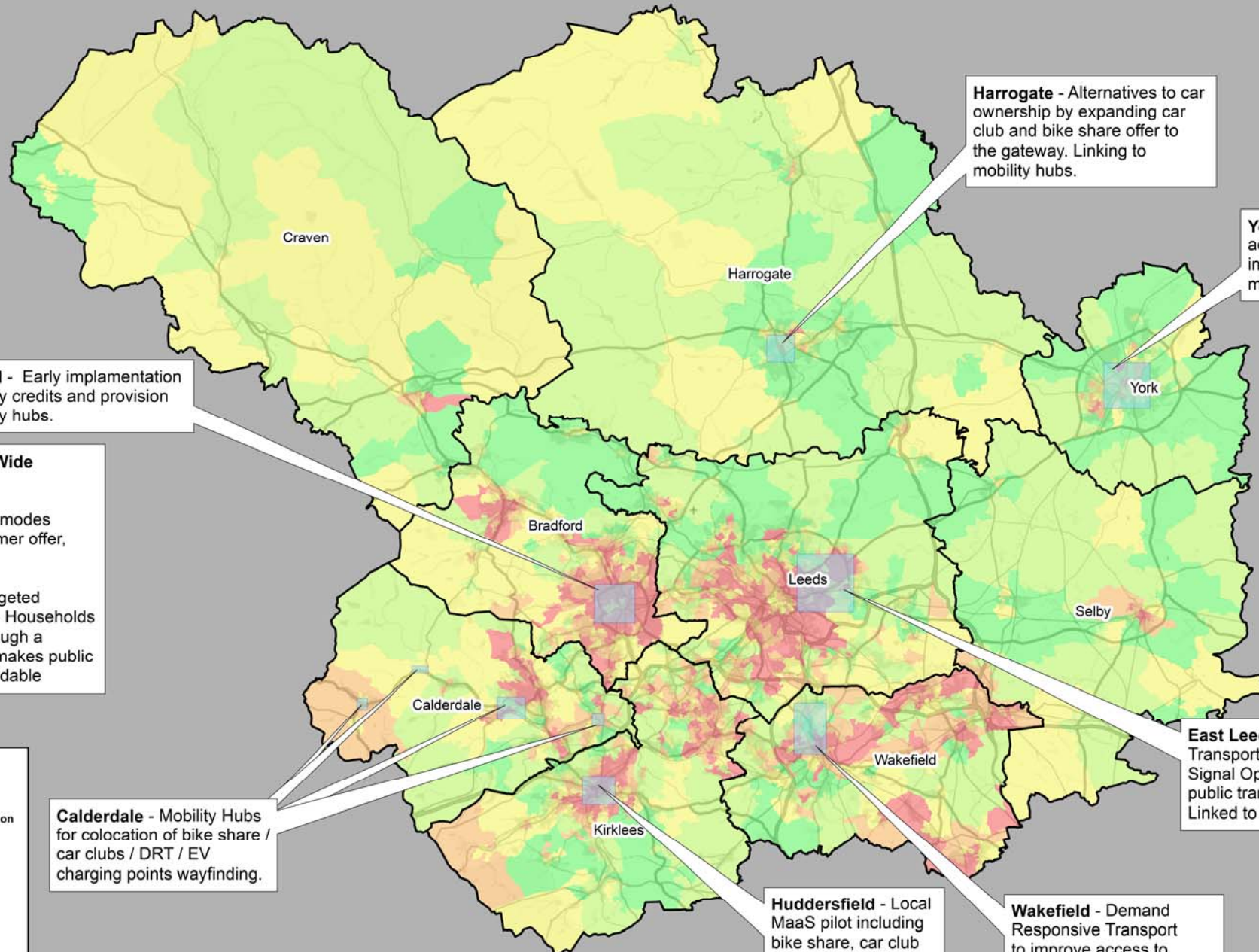


Leeds City Region - Future Mobility Zone and Index of Multiple Deprivation



Bradford - Early implmentation of mobility credits and provision of mobility hubs.

Harrogate - Alternatives to car ownership by expanding car club and bike share offer to the gateway. Linking to mobility hubs.

York - Demand responsive access for mobility impaired users. Linking to mobility hubs.

FMZ bid – Region Wide

- MaaS that enables integration of Public Transport and other modes e.g. improved customer offer, ticketing
- Mobility Credits targeted towards low income Households and Jobseekers through a new system which makes public transport more affordable

Future Mobility Zones

Index of Multiple Deprivation

- 1 - 2 (Red)
- 3 - 4 (Orange)
- 5 - 6 (Yellow)
- 7 - 8 (Light Green)
- 9 - 10 (Dark Green)

Calderdale - Mobility Hubs for colocation of bike share / car clubs / DRT / EV charging points wayfinding.

East Leeds - Demand Responsive Transport Solution and Traffic Signal Optimisation to prioritise public transport and cycling. Linked to mobility hubs.

Huddersfield - Local MaaS pilot including bike share, car club and public transport information at mobility hubs.

Wakefield - Demand Responsive Transport to improve access to employment opportunities. Linked to mobility hubs.

West Yorkshire Combined Authority

This map is reproduced from Ordnance Survey material with the permission of Ordnance Survey on behalf of the Controller of Her Majesty's Stationary office © Crown Copyright. Unauthorised reproduction infringes Crown Copyright and may lead to prosecution or civil proceedings (100020521):2019 © OpenStreetMap contributors