

# High Potential Opportunity

## Controlled Environment Agriculture



North & West Yorkshire



# Controlled Environment Agriculture in North & West Yorkshire

North & West Yorkshire is a world leader in controlled environment agriculture and a unique opportunity exists to exploit an array of agri-food assets, capabilities and most importantly a growing and sustained market for your products.

**Controlled Environment Agriculture (CEA) is where parameters, such as light, temperature, relative humidity and sometimes the partial gas pressure (and possibly its composition), are fully controlled.**

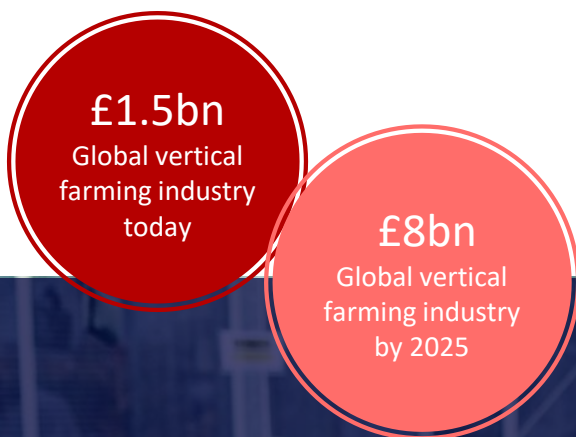
North & West Yorkshire is one of the leading centres for CEA in the UK, with an unrivalled cluster of producers, partners, suppliers, food retailers and customers. As such, opportunities exist to develop technologies and solutions in vertical farming, aquaponics, aeroponics and hydroponics. Other opportunities also lie in insect rearing for protein usage, potentially reducing the environmental impact of other proteins in animal feed and in the bio economy.

There is strong market demand within the UK, owing to high population density, high GDP per capita and a significant segment of consumers who will pay a premium for added-value fresh foods. The fruit and vegetable wholesale market, for example, is worth £10.2bn with imports making up over 80% in fruit and over 50% in vegetables, giving a clear market opportunity for locally grown produce by using CEA.

Investors within the region will find themselves in a dynamic and flexible agricultural sector, underpinned by a supportive regulatory environment. Investors can collaborate with other key companies through Yorkshire's BioVale Organisation and BioYorkshire. Research capability can also be found through the region's R&D assets including the University of Leeds's Global Food and Environment Institute and the University of York's Centre for Novel Agricultural Products.

This support will enable investors to take advantage of the opportunity to develop and apply new technologies to strengthen controlled environment agriculture systems. This includes exploiting LED lighting, sensing and machine learning to boost agricultural yields as well as using robotics and autonomous systems to expand CEA production.

The region also has significant strengths in the circular economy, including the assets of Drax Power Station, the largest biomass power plant in the world. Investors will be able to profit from anaerobic digestion (AD), use world-leading research from assets such as the BioRenewables Development Centre and also team up with key industry partners developing innovative solutions from food wastes.



Join a growing Agri-Tech cluster and your business will benefit from access to the talent, skills and research excellence you need to be successful, in a cost competitive location.



# Controlled Environment Agriculture in North & West Yorkshire

---

The Department for International Trade (DIT) is the specialist Government department that supports foreign-owned companies seeking to set up or expand in the UK.

DIT and its regional partners offer free, confidential and tailored support in key areas.

- Identifying and exploring unique market opportunities in specific UK industries
- Providing specialist advice about the business environment in the UK
- Providing financial modelling to compare corporate locations by quality, risk and profit after tax
- Developing bespoke market research including industry analysis, market entry support, research and development collaborations, location benchmarking and cost analysis
- Entrepreneurial assistance through a network of mentors to help make a commercial success of early stage companies
- Continuing support after a business has invested in the UK – providing assistance on expansion and further investment, and representing a company's interests in government
- A network of International Trade Specialists providing bespoke services to support businesses with exporting from the UK

---

## Contact us

### Web

[www.great.gov.uk](http://www.great.gov.uk)

### Email

[enquiries@invest-trade.uk](mailto:enquiries@invest-trade.uk)

### Phone

+44 (0) 207 000 9012

If you have already contacted us, an investment advisor will be in touch with you soon.

## What makes North & West Yorkshire the right choice for your business?

A track record of success in CEA. North & West Yorkshire has a dynamic and established cluster of expertise offering unique advantages to investors.



A competitive costs package against comparative European locations, including low industrial costs and salary costs some of the lowest in Europe.



3,990 students in Food and Beverage Studies; Production and Manufacturing Engineering; Software Engineering and Computer Science to meet the industry needs.



Collaborate with 2 of the largest food retailers in the UK, headquartered in Leeds and Bradford, and over 700 food production companies, 13,000 farms and 25,000 workers.



A vibrant cluster of innovative SMEs operating alongside key research and innovation facilities including the Innovate UK funded Agri-Tech centres Crop Health and Protection (CHAP) and the Centre for Innovation Excellence In Livestock (CIEL).





### **Department for International Trade**

The UK's Department for International Trade (DIT) has overall responsibility for promoting UK trade across the world and attracting foreign investment to our economy. We are a specialised government body with responsibility for negotiating international trade policy, supporting business, as well as delivering an outward-looking trade diplomacy strategy.

### **Disclaimer**

This information has been prepared by the Department for International Trade (DIT), and suppliers of DIT, for general informational purposes only. This information is not intended to amount to advice on which you should rely. Although DIT and its suppliers makes reasonable efforts to ensure the accuracy of any information provided, neither DIT nor any of its suppliers makes any representations, warranties or guarantees, whether express or implied, that any information supplied is accurate, complete or up-to-date. Accordingly, you must obtain professional or specialist advice before taking, or refraining from, any action on the basis of this information.

Neither DIT nor any of its suppliers accepts any responsibility for updating this information in light of subsequent events or for any other reason. This information does not constitute a recommendation or endorsement by DIT or any of its suppliers. To the fullest extent permitted by law, neither DIT nor any of its suppliers accepts or assumes any responsibility or liability to any reader of this information for any loss or damage, whether in contract, tort (including negligence), breach of statutory duty, or otherwise, even if foreseeable, arising under or in connection with the use of or reliance on this information including, but not limited to, loss of profits, sales, business, or revenue, business interruption, loss of business opportunity, goodwill or reputation, or any indirect or consequential loss or damage. Should any such reader choose to rely on this information, then they do so at their own risk. DIT is the owner, or the licensee, of all intellectual property rights in this information and DIT reserves all rights in this information.

[www.great.gov.uk](http://www.great.gov.uk)

